
WiFi Microscope

User's Manual



Contents

CHAPTER 1 NOTICE AND SAFETY REQUIRE	1
1.1 Cautions and Notes	1
CHAPTER 2 SOFTWARE SYSTEM REQUIREMENTS	2
2.1 System Requirements under USB Work Mode	2
2.2 System Requirements under WiFi Work Mode	2
CHAPTER 3 PACKING LIST	3
CHAPTER 4 PRODUCT INSTALLATION INSTRUCTIONS	4
4.1 Install and remove WiFi Microscope	4
4.1.1 Install battery	4
4.1.2 Switch adapters	4
CHAPTER 5 FUNCTION INTRODUCTION	5
5.1 Introduction of Hardware and Its Functions	5
5.1.1 Buttons and Functions	5
5.2 Units of the Main body	8
5.3 Introduction of Each Unit	9
CHAPTER 6 INSTRUCTION	10
6.1 USB Wired Work Mode	10
6.1.1 Install Micro Capture Software	10
6.1.2 Connect Device	10
6.1.3 Open Software	10
6.1.4 Start to Use	10
6.2 WiFi Work Mode-IOS System	11
6.2.1 Install Ucam Plus for iOS software	11
6.2.2 To Connect Device	11
6.2.3 Open Software	11
6.2.4 Start to Use	11
6.3 WiFi Work Mode-Android System	11
6.3.1 Install Ucam Plus for Android Software	11
6.3.2 To Connect Device	11
6.3.3 Run the Software	12
6.3.4 Start to Use	12

Chapter 1 Notice and Safety Require

1.1 Cautions and Notes

- (1) To avoid danger or damage incurred to the lens, do not touch the lens or sensor directly with your fingers.
- (2) To avoid failure or electric shock hazard and so on, do not disassemble or modify the internal structure of the device.
- (3) Do not plug in or unplug the USB port when hands are wet.
- (4) Do not use alcohol and other organic solvents to clean.
- (5) If the lens or sensor is dirty or damp, you should better use dry and non-linen fabric or professional lens tissue to wipe them. To avoid scratches on the surface, do not touch the lens with your fingers. Wipe the lens or sensor lightly.
- (6) The products are not specifically designed for an outdoor use. Do not expose it to outdoor environment without any protection. Excessive temperature and humidity will damage the lens. Please avoid using the product under the following environment: high temperature or high humidity environment, places with direct sunlight, dirt or vibration and places near heat source.
- (7) Please use and store in the following environment:
Operating temperature : -10°C~ 50°C
Storage temperature: -20°C~ 60°C
Operating Humidity : 30~80%RH
Storage Humidity: 10~60%RH
- (8) If any foreign matter, water or liquid enter into the device by accident, disconnect the USB cable immediately. Please send it to the maintenance center and do not use the hair dryer to dry it by yourself.
- (9) To prevent microscope from being tripped over or dropped, please put away the device's USB cables in use or standby.
- (10) To avoid electric shock by accident, please power off microscope before you move your computer or laptop.
- (11) The cleanliness of the device lens will directly affect clarity degree of contents from the computer screen during preview. Problems like various circles or spots on the screen may mostly be incurred by dirt on the lens. When cleaning, please use professional lens tissue or other professional detergent to clear the dirt on the lens.

Chapter 2 Software System Requirements

2.1 System Requirements under USB Work Mode

- Windows XP SP3、Windows 7 (32 or 64 bits)、Windows 8 (32 or 64 bits)、Windows 8.1 (32 or 64 bits)、Windows 10 (32 or 64 bits)
- Dual core **1.6** GHz or higher CPU
- USB **2.0** high-speed interface or USB2.0 compatible interface
- DVD-ROM driver (only needed when installing software)
- **2G or more memory**
- At least **4 GB available hard-disk space**

2.2 System Requirements under WiFi Work Mode

- 2.3 or above version for Android system.
- 5.0 or above version for IOS system.

Chapter 3 Packing List

1. WiFi Microscope



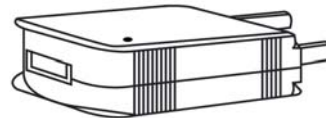
2.adapter for skin observation



3. Micro Capture installation CD



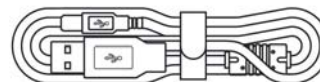
4. Power Adapter



5. Battery



6.USB cable



Chapter 4 Product Installation Instructions

4.1 Install and remove WiFi Microscope

4.1.1 Install battery

1. Open the cover for battery (Picture 1)
2. Put the battery into the case (pay attention to positive and negative electrode while installation, otherwise may cause the battery short circuit.) (Picture 2)

Remove battery: push the battery from positive electrode to negative electrode carefully (please do not use electric conductor to connect positive and negative electrode of the battery, otherwise may cause the battery short circuit.)

3. Press down batterycover (Picture 3)



Picture 1 (Pry up)

Picture 2 (Put down battery)

Picture 3(Press down battery cover)

4.1.2 Switch adapters

1. Remove adapter counterclockwise
2. Install adapter clockwise



Picture 4 (Remove adapter counterclockwise)

Picture 5 (adapter removed)

Picture 6 (Install adapter clockwise)

Chapter 5 Function Introduction

5.1 Introduction of Hardware and Its Functions



- | | | |
|-----------------------------|---------------------------|--|
| ① Slide switch | ② USB working mode | ③ Power off |
| ④ Wifi working mode | ⑤ Battery indicator | ⑥ Wifi working indicator |
| ⑦ Battery indicator | ⑧ Scroll to left: zoom in | ⑨ Press to switch: Observation Mode Switch |
| ⑩ Scroll to right: zoom out | ⑪ Battery cover | ⑫ Record |
| ⑬ LED brightness control | ⑭ USB interface | ⑮ Adapter for skin observation |

5.1.1 Buttons and Functions

【1】 working modes

①wifi working mode

Witch WiFi Microscope to WiFi working mode.

- ◇operation method of WiFi working mode please refer to 《User Manual of Ucam Plus for iOS English》 .
- ◇you may charge the battery while using WiFi Microscope under WiFi working mode by using power adapter or PC.

②wired USB working mode

Witch WiFi Microscope to USB working mode.

- ◇operation method of WiFi working mode please refer to 《User Manual of Micro Capture English》 .
- ◇you may charge the battery while using WiFi Microscope under USB working mode by plugging to PC.

③power off

you may charge the battery after power off WiFi Microscope by plugging to PC or using power adpater.

【2】 LED indicators**①battery indicator**

When the battery power is full, LED shows in green; power moderate, shows yellow; insufficient, red. When displayed in red, please charge as soon as possible.

②wifi indicator

When wifi indicator start flashing, means it is under WiFi working now.

Flashing in green ⇔ WiFi working mode has start

Flashing speed ⇔ wifi signal strength, the stronger the signal, the faster the flashing.

③charging indicator

You can use WiFi Microscope while charging power.

Green ⇔ full power

Red ⇔ power not full

【3】 Thumbwheel switch

Thumbwheel switch can control three functions: zoom in, zoom out and observation mode switch.

Switch to left: zoom in; zoom in one level through one switch with 6 levels in total;

Switch to right: zoom out; zoom out one level through one switch with 6 levels in total;

Press the middle: Three observation modes switching in turn, divided into standard mode, bright condition mode and dark condition mode.

Note: 1.Zoom in and zoom out are only available under resolution of 640x480 、800x600、1024x768.

2.When switching, the switch is in free state (central position), press the icon vertically.

(1) Standard mode: the device will always be in this state as it is switched on. The mode is for conventional scenarios.

Note: The focus frame's color is blue in standard mode.

(2)Bright condition mode: press next, the mode will switch from standard mode to bright condition mode. This mode is for watching dark objects in bright background. (Below demonstrates the difference between standard mode and bright condition mode.)



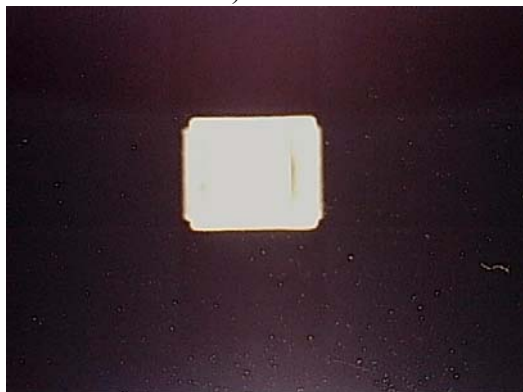
Standard mode



Bright condition mode

Note: The focus frame's color is red in standard mode.

(3) **Dark condition mode:** Press next in bright condition mode, it will be switched to dark condition mode. The mode is for watching bright objects in dark background. (Below demonstrates the difference between standard mode and dark condition mode.)



Standard mode



Dark condition mode

Note: The focus frame's color is yellow in standard mode.

【4】 adapter for skin observation

Install another adapter to observe skin.

【5】 USB interface

The USB interface can be used for charging battery and connecting to PC as well.

【6】 brightness control

【7】 Record with Built-in microphone

You may record audio video by using the built-in microphone.

【8】 Change battery

You may change battery as picture shown below



5.2 Units of the Main body



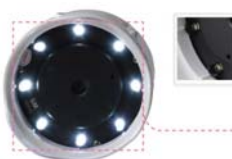
Material : WiFi Microscope is adapt environment friendly PC/ABS material, UV surface handing. From the beginning of design, we take everything into consideration: fine properties, fashion appearance, remarkable optical functions. Everything gets balance to produce such a smart and beautiful WiFi Microscope.



Camera : WiFi Microscope has high definition 5.0MP camera, it roll high resolution, stable image quality, HD record, and auto focus into one. Simplest operation, effortlessly works with iOS, Android, and smart devices.



Adapter : Specialized adapter for different usages and industries.

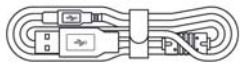


LED lights : WiFi Microscope even works excellently on dark environment, thanks for 8 LED lightings.



Battery slot : WiFi Microscope is more facilitate with open battery slot for changing battery easily, support long time working.

5.3 Introduction of Each Unit



USB Cable : Charge the WiFi Microscope eyepiece camera from the USB port in PC or adaptor.that makes the data transmission stable, effective, and safer.



Power adaptor : Charge the eyepiece with USB Cable. This adaptor is simple and small, and the rated operational voltage is between AC100V-240V, 50-60Hz.

°



Carrying Bag : Waterproof and practical carry pouch, always facilitate your life.

Chapter 6 Instruction

6.1 USB Wired Work Mode

6.1.1 Install Micro Capture Software

Put the affiliated disk into the DVD disk of the computer, click the file “Micro Capture Install” and finish the application software installation according to prompts of the software. For detailed install methods, please refer to *User Manual of Micro Capture English*.

6.1.2 Connect Device

- (1) Connect the attached USB cable Micro USB end (small one) to the USB port of the WiFi Microscope eyepiece camera and the USB-A port (big one) of the USB cable to the USB port of the computer.
- (2) Turn the WiFi Microscope eyepiece camera work mode switch to USB work mode. It may appear the reminder for installing device's driver when you first use the WiFi Microscope eyepiece camera and then system will finish installation automatically.

6.1.3 Open Software

- (1) Place the WiFi Microscope and put the observed objects right under the microscope.
- (2) Run the Micro Capture software in the computer and observe the required image on the device.

6.1.4 Start to Use

- (1) Choose the adapter you need
- (2) Observe the object with WiFi Microscope
- (3) LED buttons are available for adjust brightness
- (4) Press zoom in/ out /auto focus switcher according to your needs.
- (5) For more detailed instructions, please refer to User Manual of Micro Capture English.

6.2 WiFi Work Mode-IOS System

6.2.1 Install Ucam Plus for iOS software

Download and install Ucam Plus software in APP Store of Apple.

6.2.2 To Connect Device

- (1) Switch the work mode of the WiFi electronic microscope to WiFi. Within 20 seconds, WiFi indicator inside the WiFi electronic eyepiece flashes blue.
- (2) Setup for IPAD or IPHONE system- Connect the WiFi electronic eyepiece with WiFi. WiFi name: VideoWiFi-xxxxxx, Code: 12345678

6.2.3 Open Software

- (1) Place the WiFi Microscope and put the observed objects right under the microscope.
- (2) Execute the Ucam Plus software under the desktop of system to observe your needed image.

6.2.4 Start to Use

For more detailed instructions, please refer to *User Manual of Ucam Plus for iOS English*.

6.3 WiFi Work Mode-Android System

6.3.1 Install Ucam Plus for Android Software

You can use one of the following two methods when installing software.

- (1) Download and install Ucam Plus software on Google play.
- (2) Copy the Ucam Plus for Android software to Android system for installation.

6.3.2 To Connect Device

- (1) Switch the work mode of the WiFi electronic microscope to WiFi. Within 20 seconds, WiFi indicator inside the WiFi electronic eyepiece flashes blue.
- (2) Setup for IPAD or IPHONE system- Connect the WiFi electronic eyepiece with WiFi. WiFi name: VideoWiFi-xxxxxx, Code: 12345678

6.3.3 Run the Software

- (1) Position **WiFi Microscope** and align the camera to objects to be viewed.
- (2) Run the software Ucam Plus on the desk of the system and observe the required image.

6.3.4 Start to Use

For detailed specifications, please refer to *User Manual of Ucam Plus for Android English*.